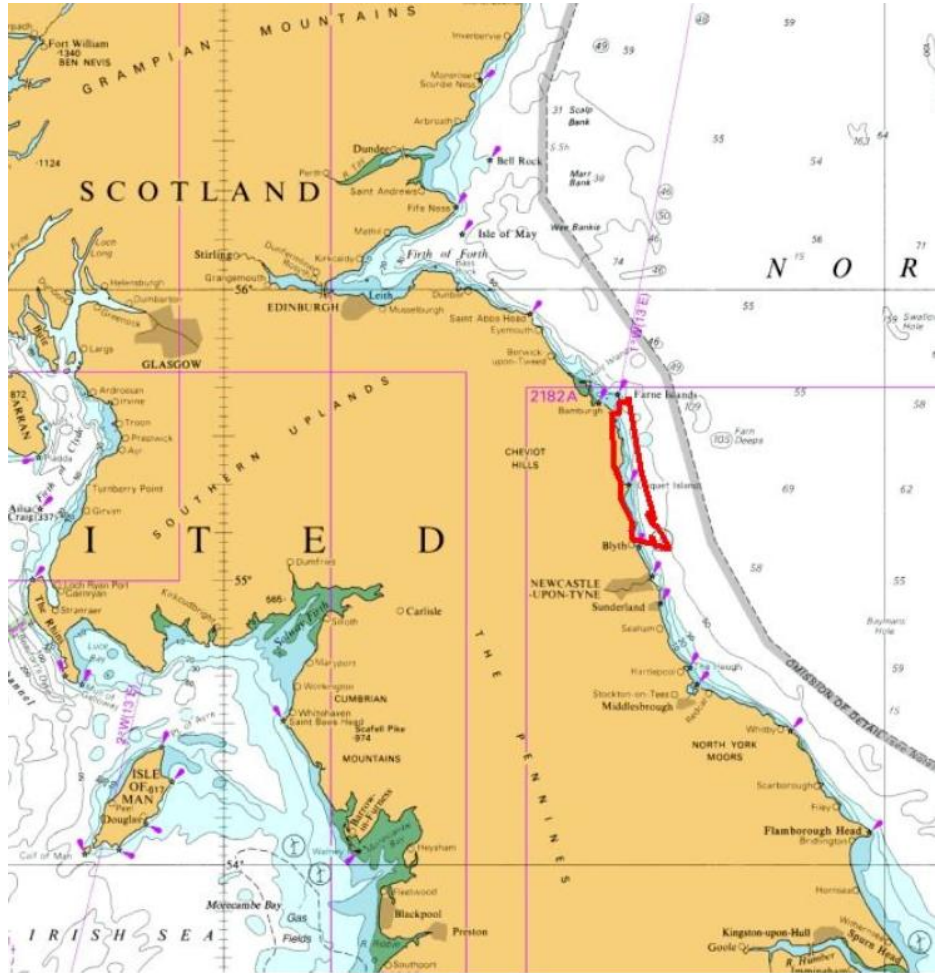
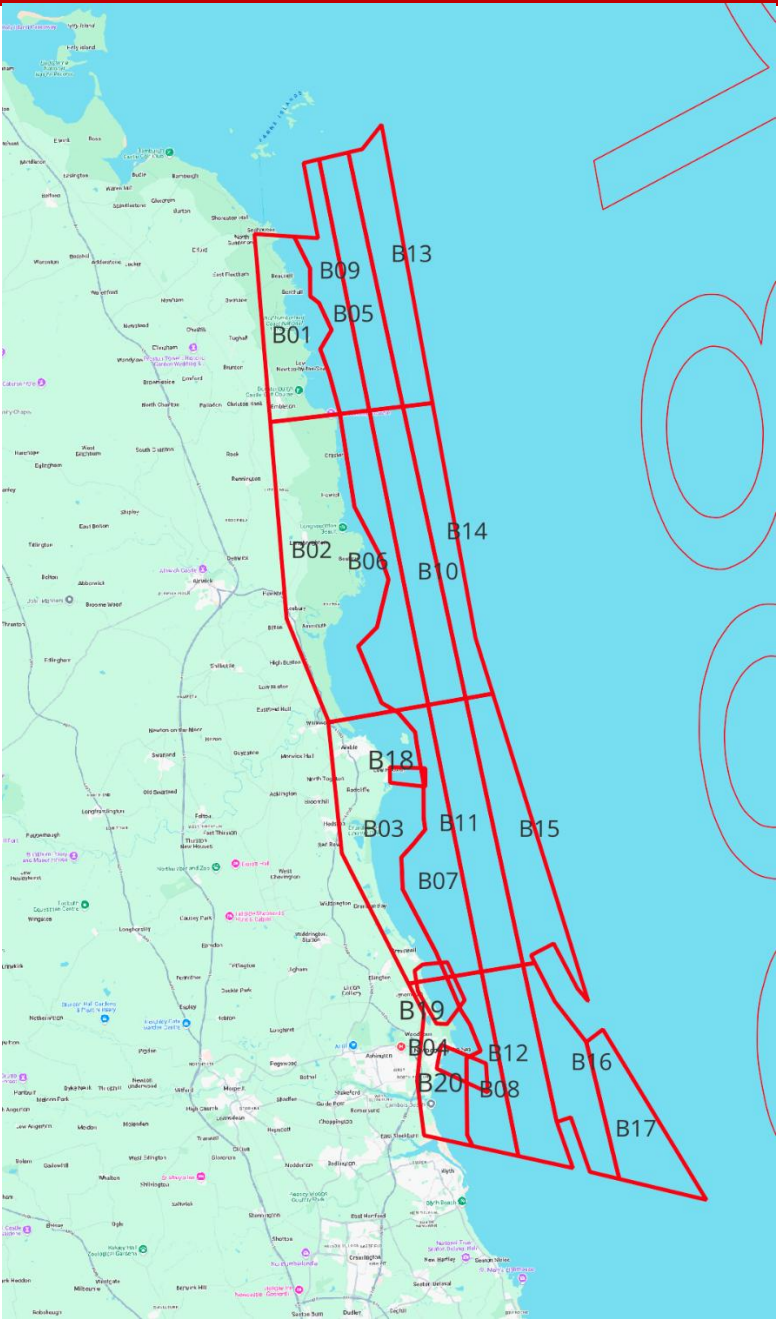


Notice to Mariners Hydrographic Survey

Blythe to Farne Islands area

VESSEL:	Lode, Northern Breeze	<u>PRELIMINARY PLAN FOR THIS WEEK:</u> Nearshore survey operations in HI1888 – Blythe to Farne Islands area, blocks B01 and B02.
MANEUVERABILITY:	LIMITED	
EQUIPMENT:	MULTIBEAM (Hull-mounted and partially towed sensors)	
PERIOD:	6th of November – 10th of November 2025 (partially during this period)	
PURPOSE:	UPDATING NAUTICAL CHARTS	



Lode

Call sign: SFC9613
MMSI: 232005827
Bridge phone: +46 10 402 31 29
Email: master-lode@njordsurvey.se

Contact person at Njord Survey:

Philip Ljungström +46 708 79 90 26
Martin Wikmar +46 708 79 90 20



Northern Breeze

Call sign: MRWT6

MMSI: 232060460

Email: master-northernbreeze@njordsurvey.se

Contact person at Njord Survey:

Philip Ljungström +46 708 79 90 26

Martin Wikmar +46 708 79 90 20

