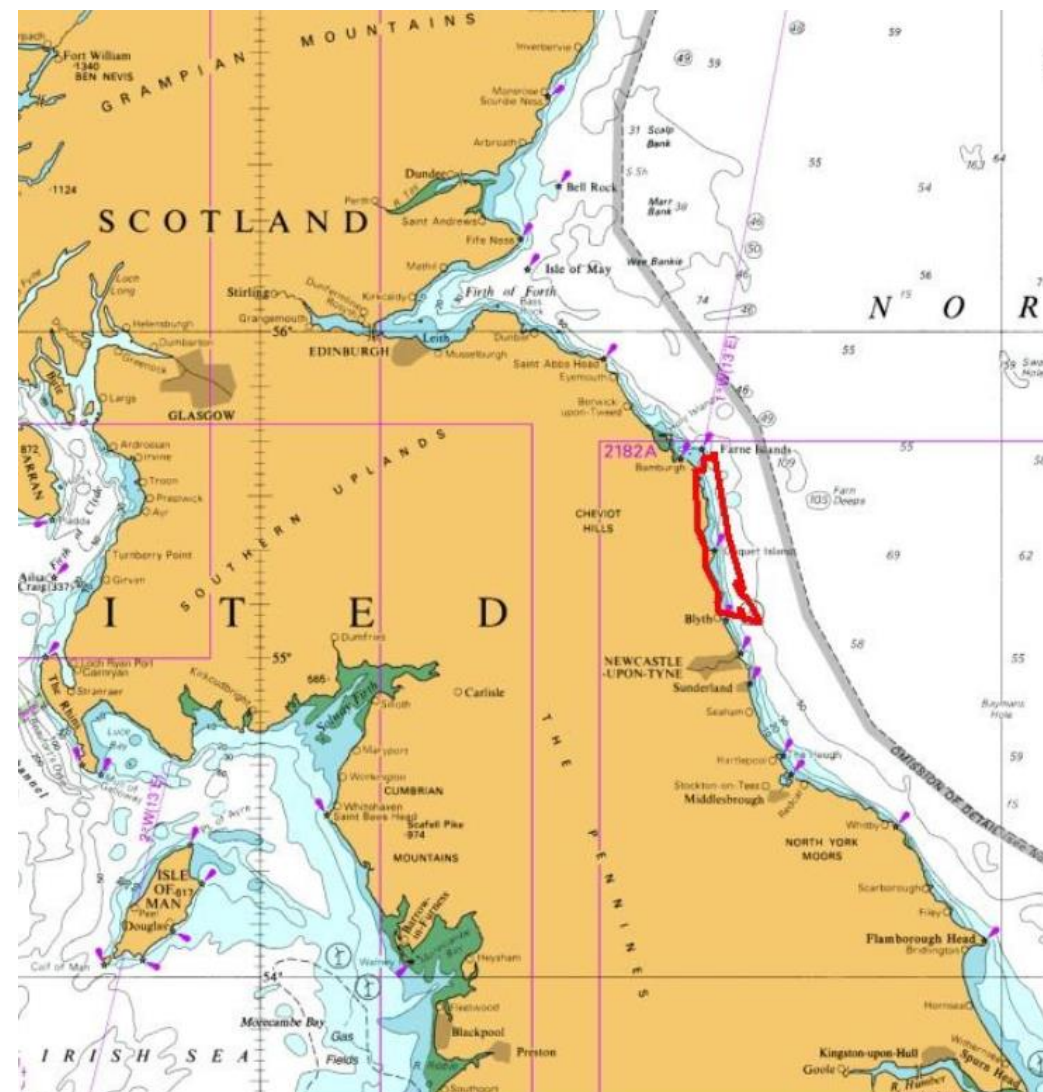
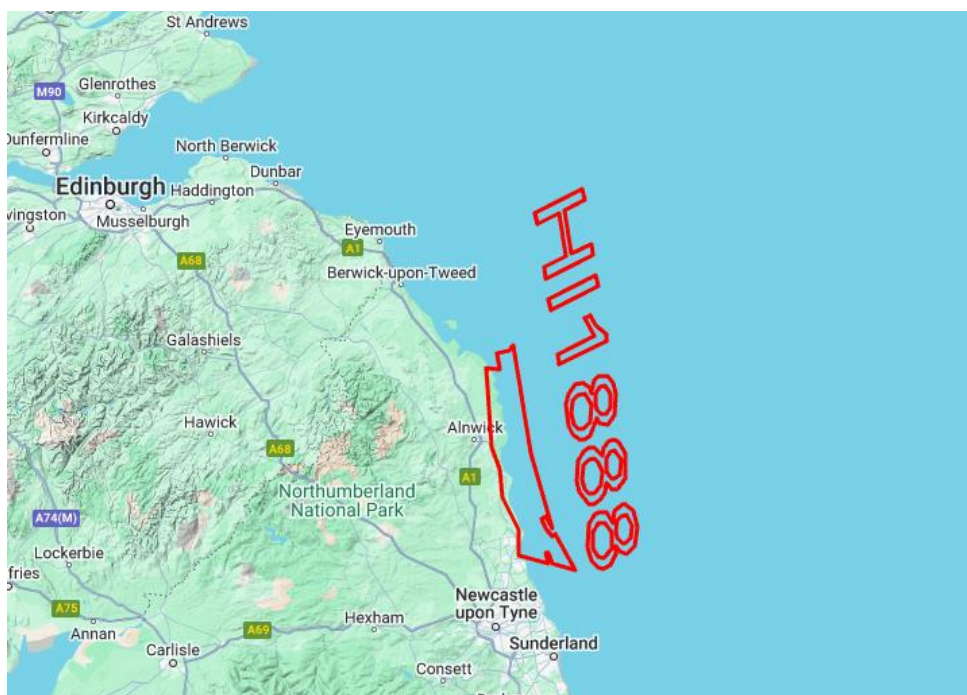


Notice to Mariners Hydrographic Survey

Blythe to Farne Islands area

- ❑ VESSEL: M/V NORTHERN STORM
- ❑ MANEUVERABILITY: LIMITED
- ❑ EQUIPMENT: MULTIBEAM
(Hull mounted and partially Towed)
- ❑ PERIOD: 15st of April – 17th of July 2025
(partially during this period)
- ❑ PURPOSE: UPDATING NAUTICAL CHARTS



M/V Northern Storm

- Call sign: MISA7
- Bridge (VOIP): +46 31 320 10 61
- Email: master-northernstorm@njordsurvey.se

Contact person at Njord Survey:

- Martin Wikmar +46 708 79 90 20
- Philip Ljungström +46 708 79 90 26

