

## NOTICE TO MARINERS: UNMANNED SURFACE VESSEL (USV)

**Activity:** Operations of remotely piloted Uncrewed Surface Vessels (USVs) are planned out of the ports of Amble / Blyth during July and August 2022. Up to four USVs will be operational at any one time. The vessels will be engaged in survey activities associated with the investigation of a site for development of an offshore wind farm in the North Sea, approximately 40 km off the east coast of Scotland.

**Dates:** Operations will take place subject to weather and other operational factors from 14<sup>th</sup> July 2022 for up to 6 weeks.

A support vessel will escort the USVs from the active ports to clear water. The support vessel is the Oceanic (Call Sign: 2FUR9, MMSI: 235057677)

Although the vessels are uncrewed, they are crewed throughout the 24 hour operation, piloted remotely using 360 degree cameras and other navigational aids.

Figure 1 below indicates the operational area. The survey area boundary is indicated in Table 1 below also. In addition to the survey area, the USVs will transit from one of the named ports above to site.

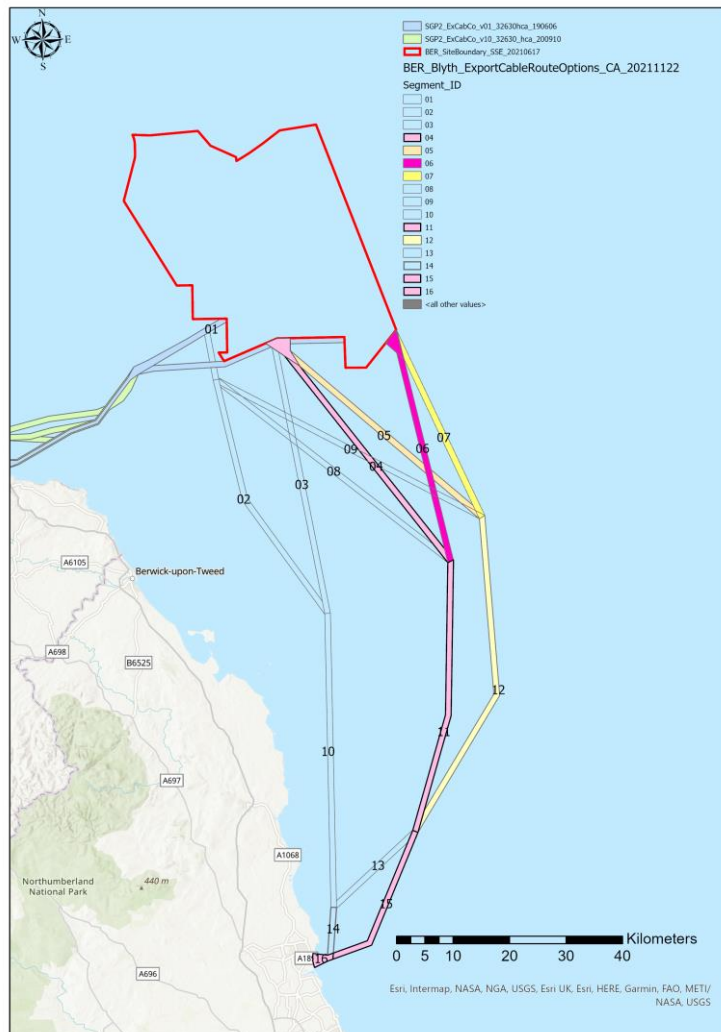


Figure 1: Operational Areas highlighted in pink and yellow

Table 1: Survey Area Coordinates

Point	Latitude (decimal degrees)	Longitude (decimal degrees)
1	55.141045	-1.511078
2	55.154603	-1.484203
3	55.154703	-1.454503
4	55.161403	-1.435503
5	55.165103	-1.417703
6	55.176783	-1.342299
7	55.353579	-1.206333
8	55.570063	-0.965832
9	55.862414	-0.992791
10	56.149477	-1.218941
11	56.159588	-1.245328
12	56.3384	-1.361547
13	56.150951	-1.298084
14	56.149418	-1.663581
15	56.11545	-1.576371
16	55.783701	-1.132582
17	55.545612	-1.15031
18	55.36747	-1.247781
19	55.273902	-1.569791

Table 3: Vessel Details

Name:	X-09 UNCREWED	X-15 UNCREWED	X-18 UNCREWED	X-19 UNCREWED	X-20 UNCREWED
MMSI:	232027632	232035682	232039415	232039416	232042736
Length:	4.5m	4.5m	4.5m	4.5m	4.5m
Beam:	2.2m	2.2m	2.2m	2.2m	2.2m
Speed:	3.5kts	3.5kts	3.5kts	3.5kts	3.5kts
Draught:	1.5m	1.5m	1.5m	1.5m	1.5m
Tonnage:	750kg	750kg	750kg	750kg	750kg



Figure 2: XO-450 USV

The USV sends real time images and situational awareness data over satellite to a team of operators keeping watch and controlling the vessel remotely 24/7.

**Safety Precautions:** The USV is equipped with the following to make it conspicuous to other marine traffic:

- AIS
- Navigation Lights & Sound Signal
- Active Radar Reflector
- Superstructure Painted Yellow
- No towed gear

Seafarers are asked to avoid contact with the vessel and be aware of the operational area during this period.



